

MOTOR SPECIFICATION SHEET

MODEL : SF-J 30HP 2P (LT)

USED FOR : STANDARD

| DESCRIPTION | DETAIL | | | | | |
|----------------------------------|---|------|------|------|------|--|
| PHASE | 3 | | | | | |
| MODEL NAME | SF-J | | | | | |
| RATED OUTPUT, HP (kW) | 30 (22) | | | | | |
| POLE | 2 | | | | | |
| CODE | MEATH CODE : 1M002F-202200J-FY3 | | | | | |
| OUTLINE DRAWING NO. | OMM34O023-B | | | | | |
| RATED VOLTAGE (V) | 220 | 380 | 415 | 220 | 440 | |
| RATED FREQUENCY (Hz) | 50 | 50 | 50 | 60 | 60 | |
| RATED CURRENT (A) | 73 | 42 | 39 | 71 | 36 | |
| RATED SPEED (min ⁻¹) | 2910 | 2910 | 2930 | 3490 | 3510 | |
| THERMAL CLASS | 155(F) | | | | | |
| RATING | S1 (CONTINUOUS) | | | | | |
| ENCLOSURE CONSTRUCTION | TOTALLY ENCLOSED FAN COOLED | | | | | |
| DEGREES OF PROTECTION | IP55 | | | | | |
| METHOD OF COOLING | IC411 | | | | | |
| FRAME NO. | 180M | | | | | |
| WEIGHT (kg) | 190 | | | | | |
| STANDARD | IEC 60034-1, JEC-2137-2000 | | | | | |
| INSTALLATION | FOOT MOUNTED | | | | | |
| ROTATION | CCW (VIEWED FROM SHAFT END) | | | | | |
| BEARING | LOAD SIDE : 6311ZZ | | | | | |
| | OPPOSITE SIDE : 6310ZZ | | | | | |
| BEARING GREASE | UREA GREASE | | | | | |
| NOISE (dB.A) | 90 | | | | | |
| VIBRATION | V15 | | | | | |
| CIRCUMSTANCE CONDITION | AMBIENT TEMPERATURE : -20 ~ +40°C | | | | | |
| | AMBIENT HUMIDITY : 95%RH OR LESS | | | | | |
| | ABOVE SEA LEVEL : 1000m OR LESS | | | | | |
| | ENVIRONMENT : NO BURSTING/EROSIVE GAS OR VAPOR | | | | | |
| COLOR | MUNSELL N5.5 (GRAY) | | | | | |
| TERMINAL BOX | NO. OF LEAD WIRES : 6 | | | | | |
| | SOURCE CONNECTION : LEAD WIRES | | | | | |
| INSULATION RESISTANCE | BY DC 500V MEGGER - ≥100MΩ | | | | | |
| DIELECTRIC TEST | AC 50Hz 1800V - 1min. (Based on rated voltage 380V) | | | | | |
| SHAFT SWING | ≤0.05mm | | | | | |
| MATERIAL | FRAME : CAST IRON | | | | | |
| | BRACKET : CAST IRON | | | | | |
| | SHAFT : CARBON STEEL | | | | | |
| | STATOR CORE : ELECTRICAL STEEL | | | | | |
| | WIRE : ENAMELLED COPPER MAGNET WIRE | | | | | |
| | INSULATOR : POLYESTER FILM SATURATED WITH RESIN | | | | | |
| | VARNISH : EPOXY DENATURALIZATION POLYESTER | | | | | |
| | ROTOR CORE : ELECTRICAL STEEL | | | | | |
| | CONDUCTOR : ALUMINIUM | | | | | |
| | TERMINAL BOX : STEEL PLATE | | | | | |
| PAINTING : POLYURETHANE RESIN | | | | | | |
| PRODUCTION COUNTRY | THAILAND | | | | | |

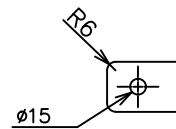
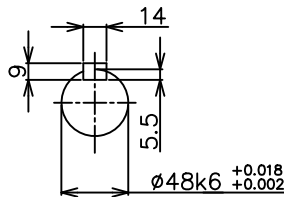
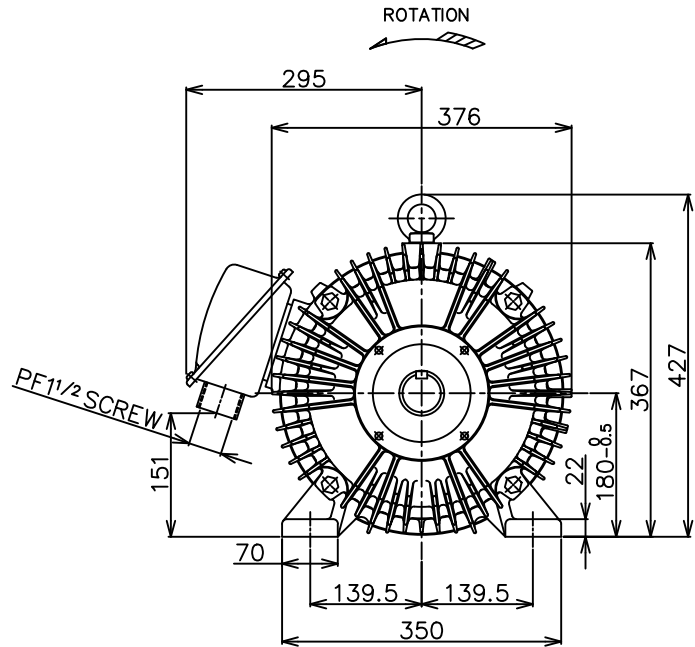
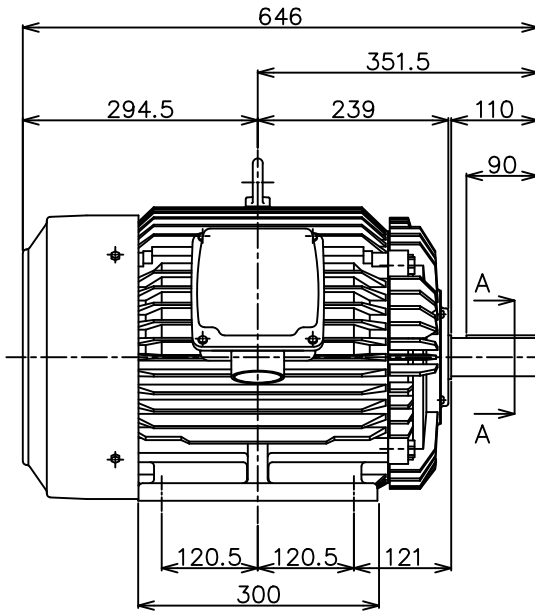
Specifications subject to change without notice.

| | | | | |
|--------------------------------|--|--|--|--|
| SPECIFICATION SHEET NO. | | | | |
| SS-M-3140-B | | | | |

MODEL SF-J THREE PHASE INDUCTION MOTOR OUTLINE DRAWING

TOTALLY ENCLOSED FAN COOLED
 DEGREES OF PROTECTION IP55
 DUST & WATER JET PROOF

CUSTOMER _____
 USER _____
 FOR _____
 CUSTOMER'S ORDER NO. _____
 QUANTITY _____
 MFG. ORDER NO. _____



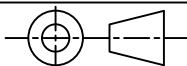
SECTION A-A

FRAME FOOT AS VIEWED FROM BELOW

| YOUR ORDER | FRAME SIZE | RATING | TH. CLASS | AMB. TEMP. | BEARINGS | | COLOR | DIRECTION OF ROTATION | NO. OF LEAD WIRES | REMARKS |
|------------|------------|------------|-----------|------------|-----------|-----------|---------------------|-----------------------|-------------------|---------|
| | | | | | LOAD SIDE | OPP. SIDE | | | | |
| | 180M | S1 (CONT.) | 155(F) | 40° C | 6311ZZ | 6310ZZ | GRAY (MUNSELL N5.5) | CCW | 6 | |

| | OUTPUT | | POLES | VOLT | HERTZ | REMARKS |
|--|--------|------|-------|-------------|-------|---------|
| | HP | kW | | | | |
| | 30 | 22 | 2 | 220/380/415 | 50 | LT |
| | | | | 220/440 | 60 | |
| | 25 | 18.5 | 4 | 220/380/415 | 50 | LT |
| | | | | 220/440 | 60 | |
| | 30 | 22 | 4 | 220/380/415 | 50 | LT |
| | | | | 220/440 | 60 | |
| | 20 | 15 | 6 | 220/380/415 | 50 | LT |
| | | | | 220/440 | 60 | |
| | 30 | 22 | 2 | 380/415 | 50 | HT |
| | | | | 380/440 | 60 | |
| | 25 | 18.5 | 4 | 380/415 | 50 | HT |
| | | | | 380/440 | 60 | |
| | 30 | 22 | 4 | 380/415 | 50 | HT |
| | | | | 380/440 | 60 | |
| | 20 | 15 | 6 | 380/415 | 50 | HT |
| | | | | 380/440 | 60 | |

MITSUBISHI ELECTRIC AUTOMATION (THAILAND) CO., LTD.



DIMENSION IN mm.
 SCALE : NTS

OUTLINE DRAWING NO.

0 M M 3 4 0 0 2 3

REV.

B